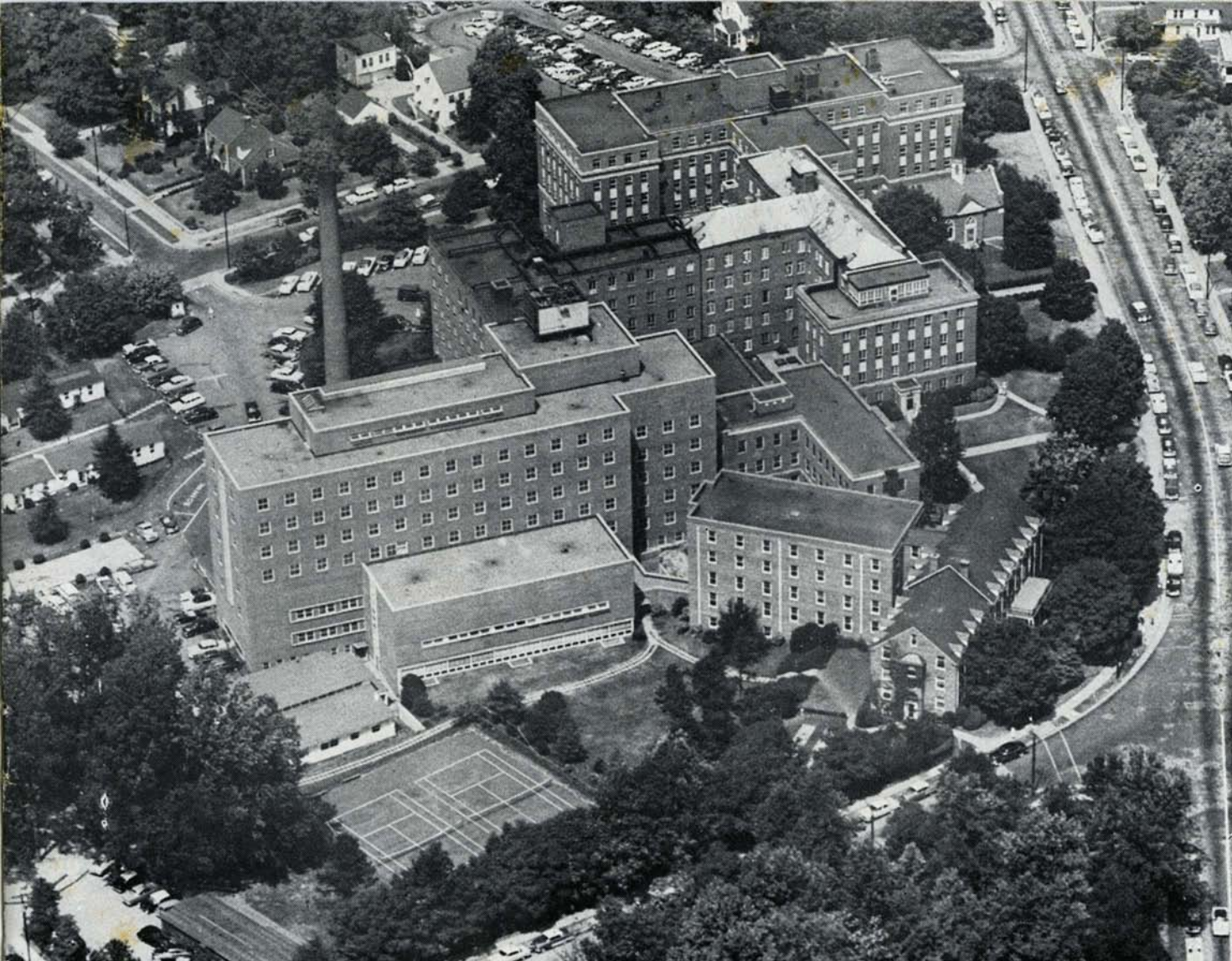


The School of Nursing...



Winston-Salem, N. C.



Medical
School

Davis
Memorial
Chapel

Hospital

Out-Patient
Clinic

Nurses
Home

PURPOSE AND PHILOSOPHY

The purpose of the School of Nursing is to provide, in its three year program of study, a selective and well-organized learning experience for the education of professional nurses, who will be prepared to give competent nursing care in a contemporary society. Inherent in this purpose is the growth and development of the individual student, personally and socially, as well as professionally.

The program of studies of the School is based on the philosophy that the individual student should be given the opportunity to grow physically, intellectually, professionally, spiritually, emotionally and socially—according to her own capacities. We believe these qualities are necessary in order that she may function effectively in the nursing profession and be able to adjust to an everchanging democratic society.

THE SCHOOL OF NURSING AND THE NORTH CAROLINA BAPTIST HOSPITAL

The School of Nursing of the North Carolina Baptist Hospital was organized as an integral part of the hospital in 1923. The first class of ten students graduated in May of 1926. Approximately 750 young women have graduated since that time. The average enrollment is 170.

The North Carolina Baptist Hospital was incorporated under a Board of Trustees of the Baptist State Convention in 1922, and opened its doors to the public on May 28, 1923, with a capacity of 80 beds.

The original plant has been expanded to provide for a capacity of 450 beds (including bassinets), and includes the major services of Medicine and Surgery with their associated specialties, Obstetrics, Pediatrics, and the X-Ray, Out-Patient, Medical Records, Central Supply, Purchasing, Engineering and Housekeeping Departments. A pharmacy, laundry, post office, branch bank, gift shop, lunch bar, and a spacious cafeteria are also located within the hospital. The entire building is air-conditioned.

The Bowman Gray School of Medicine of Wake Forest College is affiliated with the North Carolina Baptist Hospital as the teaching hospital for its students.

A Department of Denominational Relations is maintained by the hospital to foster a close-working relationship between the denomination and the services of the hospital.

A Department of Pastoral Care is also maintained by the hospital. Its aim is to minister to the whole person, caring for his spiritual and emotional needs. In addition to serving as chaplains, Department staff members are available for personal counseling. The Pastoral Care Department also conducts a training program in Pastoral Care for ministers, theological students and educational workers.

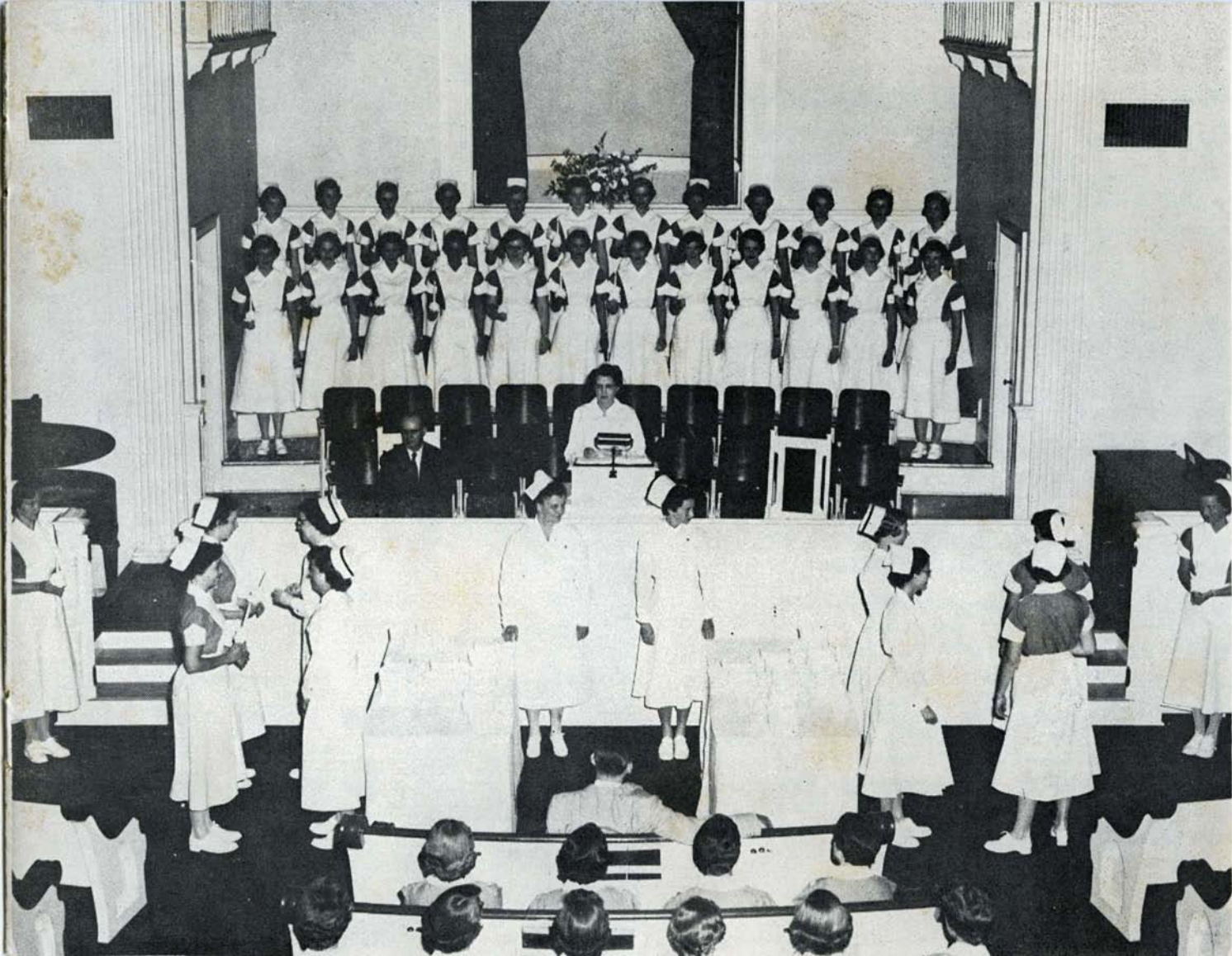
Training programs are conducted by the Departments of X-Ray, Anesthesia, and Medical Records, and these are approved by their respective agencies.

The Winston-Salem School of Practical Nursing uses the clinical services of the hospital for training practical nurses.

The hospital is fully approved by the Joint Commission on Accreditation of Hospitals.

The School of Nursing is accredited by the N. C. Board of Nurse Registration and Nursing Education and has temporary accreditation by the National League for Nursing.

Graduates of the School of Nursing are eligible for licensure in any state in the United States, to the best of our knowledge, as well as for membership in nurses' professional organizations.



Capping Exercises

ADMISSION TO THE SCHOOL OF NURSING

EDUCATIONAL REQUIREMENTS

- Graduation from an accredited high school
- A satisfactory record of achievement in high school
- Sixteen units of credit including:

English	4 units
Mathematics	2 units
Social Science, including U S. History	2 units
Foreign Language (recommended, not required)	2 units
Physical and Biological Science	2 units
Electives	4 units
	16 units

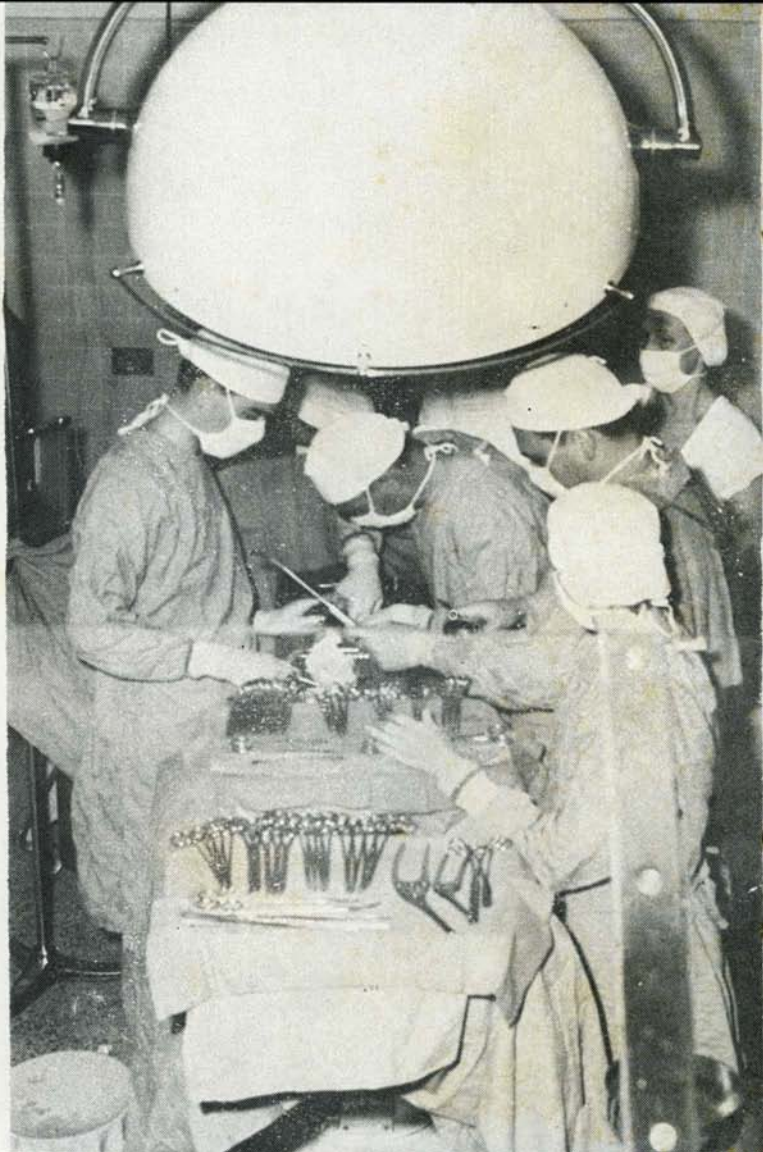
- Satisfactory performance on the pre-entrance test

PERSONAL QUALIFICATIONS

- Evidence of personal suitability for nursing
 - Age: 17-35 years
 - Health: Evidence of good physical and emotional health
 - Marital status: Qualified single or married applicants will be considered

PROCEDURE FOR ADMISSION

- Applicants are required to submit a brief autobiographical sketch, including place of birth, schools attended and locations, occupation of parents, number of children in family, church and community interest of the family as a whole, and of the applicant in particular; hobbies, school activities, club projects, chores at home, and outside employment. This sketch should be type-written, if possible, and in essay form.
- Sketch, with letter requesting application forms should be sent to:
 - Miss Joyce Warren, R.N.
 - Director School of Nursing and Nursing Service
 - North Carolina Baptist Hospital — Winston-Salem, N. C.





- The following forms will be sent to the applicant for admission:

Application for admission

Pre-entrance medical record — to be filled in by family physician

Secondary school record — to be filled in by high school principal

Catalogue of the School of Nursing

These forms must be completed and returned to the School of Nursing as early as possible in the year the applicant expects to enter.

When all forms and necessary information are received, applicants are invited, on specified dates, to visit the school for interviews, tours, and pre-entrance tests. This visit is from 11:00 a.m. on Friday to 4:00 p.m. on Saturday. Applicants are guests of the school.

The Committee on Admissions will evaluate each application and select those applicants who seem to possess the qualifications necessary for pursuing the professional nursing program. The applicant will be advised of the committee's decision.

SCHOOL POLICIES

Students are urged to maintain an average in theory and practice of 85.

The passing grade is 75. However, a consistently low grade in all or a majority of subjects, even if it be as high as 75, will require consideration of the student's status in the school and may be cause for dismissal.

Students may be placed on probation when grades, clinical practice, or attitudes fail to meet the standards of the school. Satisfactory improvement must be shown and maintained if the student remains in the school.

The faculty reserves the right to request the withdrawal of any student whose health, conduct, or work makes it inadvisable for her to remain in school.

General policies of the School of Nursing are detailed in the catalogue and must be met by all students.

COURSE OF STUDY

- The N. C. Baptist Hospital School of Nursing conducts a three-year program leading to a diploma. One class is admitted each year on Tuesday after Labor Day.
 - Plan of Instruction:
 - Pre-clinical period: Emphasis is placed on the basic science and principles of nursing fundamental to patient care.
 - Clinical period: Class work and clinical practice are parallel.
 - Psychiatric nursing: Affiliation of three months is provided at State Hospital, Raleigh, N. C.
 - Facilities for Instruction:
 - The clinical services of the N. C. Baptist Hospital provide rich clinical experience and learning situations for students of the School of Nursing.
 - The faculty consists of:
 - Full-time nurse faculty
 - Part-time faculty
 - Members of Bowman Gray School of Medicine and of the staff of N. C. Baptist Hospital.
- Educational Department (located in Nurses' Home) contains offices, class rooms, laboratories and library.

FEES AND EXPENSES

First year	²¹⁵ \$175.00
Second year	75.00
Third year	50.00
Entrance examination (physical)	3.00
Pre-entrance tests	6.00
Student government and publications	
Annual fee	10.00





A \$25.00 deposit is required when the applicant accepts appointment to the school. The \$25.00 deposit is not refunded if the application is withdrawn.

In the event of withdrawal from the school, no refund is made to the student. Uniforms and books become the property of the school when the student leaves the school for any reason before graduation.

Expenses such as spending money, shoes and hose, school capes, etc., are borne by the student.

The study of nursing in hospital schools offers opportunity for further education at relatively small expense to the student; this is possible because the student, as she learns, assists with the hospital care of the patient and thus defrays the major cost of her instruction and maintenance.

FINANCIAL ASSISTANCE

- The School of Nursing has available a limited number of scholarships and loan funds for students in need of financial assistance. The amount depends upon the need of the student and the number available.
- Application for loan funds or scholarships should be made to the Director of the School of Nursing **after** the applicant has been accepted to the school.

LIVING FACILITIES

- Unmarried student nurses reside in one of two nurses' residences. Married students are required to obtain residence outside the nurses' home at their own expense.
- Meals and laundry of uniforms are provided for all students.

HEALTH PROGRAM

- The Health Program has the dual purpose of the maintenance of health and the provision of medical care during illness.

Physical examination and chest x-ray by the family physician are required prior to admission to the school.

Admissions physical examination—is done by the health service during orientation to the school (\$3.00—entrance examination fee). Annual physical examinations are done by the school the second and third years.

GUIDANCE PROGRAM

- Counseling is a part of the education of every student in the school. This program begins when the student writes for information about the school, and continues throughout the student's period in the school. Counseling may be done by any person who participates in the educational program of the student nurse.

EXTRA-PROFESSIONAL ACTIVITIES

- The extra-professional activities program is designed to promote personal happiness and congeniality. Students are encouraged to participate through class and student organizations. Among the activities available for student participation are the following:

Student Government Activities

Baptist Student Union

Young Women's Association

Mission Volunteer Group

Student Glee Club

Student publications

Recreational and Social Programs

Religious Emphasis Week

Chapel services — Monday through Saturday and Sunday service for patients

Arts and Crafts



THE CATALOGUE OF THE SCHOOL OF NURSING CONTAINS DETAILS OF THE PROGRAM OF THE SCHOOL